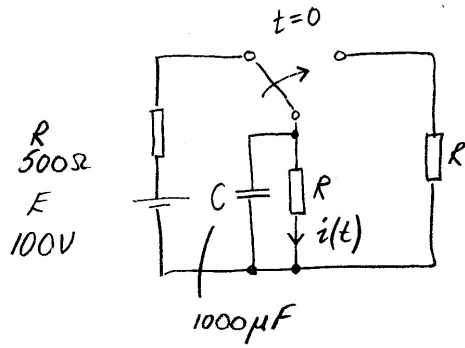


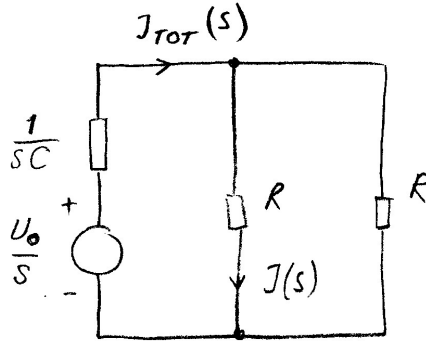
C16



BEGYNNELSE SPÄNNUNG / KONDENSATORN

$$U_0 = E \cdot \frac{R}{R+R} \Rightarrow U_0 = 50V$$

OPERATORSCHEMA  $t > 0$



$$J(s) = \frac{1}{2} \cdot J_{TOT}(s)$$

$$J_{TOT}(s) = \frac{\frac{U_0}{s}}{\frac{1}{sC} + \frac{R}{2}} = \frac{2U_0}{R} \cdot \frac{1}{s + \frac{2}{RC}}$$

$\left. \begin{array}{l} \nearrow 0,20 \\ \downarrow 4 \end{array} \right\}$

$$\Rightarrow J(s) = 0,10 \cdot \frac{1}{s+4} \Rightarrow i(t) = 0,10 e^{-4t}$$

$$i(1) = 0,10 e^{-4} A = \underline{\underline{1,8 mA}}$$